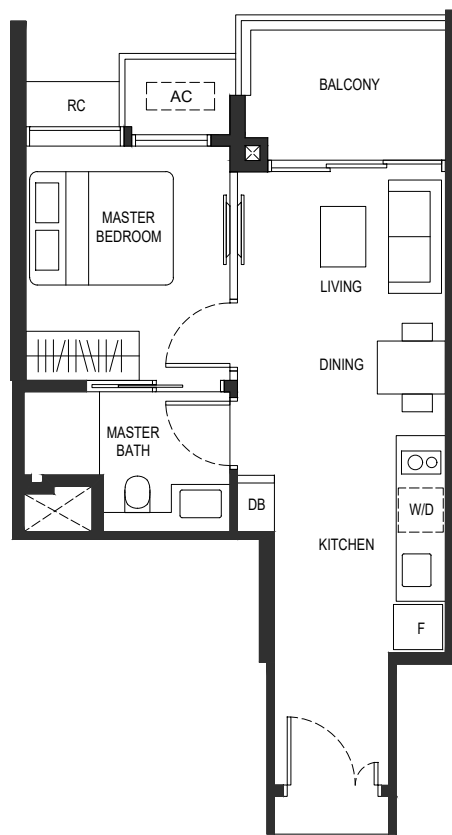


KASSIA

Type (1)a

#02-05 to #08-05
 #02-14* to #08-14*
 #02-23 to #08-23
 #02-32* to #08-32*

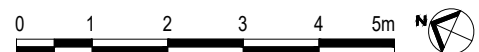


* MIRROR UNIT

LEGEND

F - FRIDGE DB - DISTRIBUTION BOARD W/D - WASHER CUM DRYER
 AC - AIRCON LEDGE RC - REINFORCED CONCRETE LEDGE (NON-STRATA AREA)

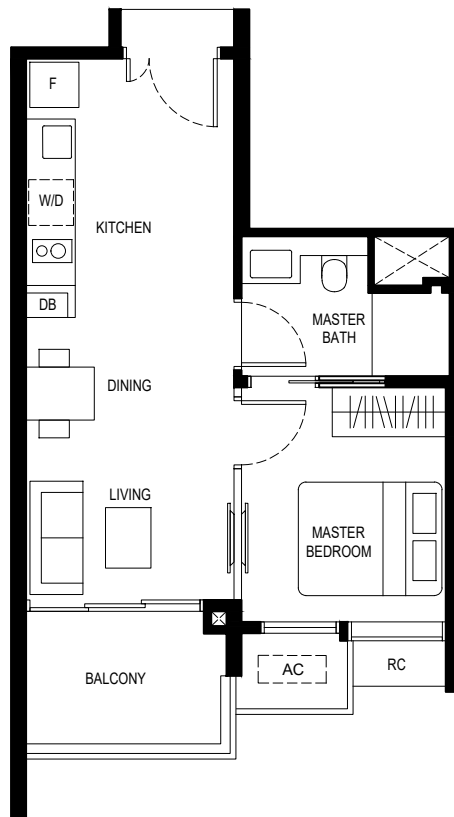
- SERVICES VOID SPACE (NON-STRATA AREA)
- RAINWATER DOWNPIPE SHAFT SPACE (NON-STRATA AREA)
- WALL NOT ALLOWED TO BE HACKED OR ALTERED (INCLUDING BY WAY OF DRILLING)
- NON - STRUCTURAL WALL



KASSIA

Type (1)b





#02-01 to #08-01
 #02-19 to #08-19
 #02-36* to #08-36*

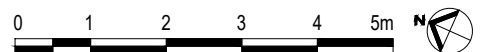


* MIRROR UNIT

LEGEND

F - FRIDGE DB - DISTRIBUTION BOARD W/D - WASHER CUM DRYER
 AC - AIRCON LEDGE RC - REINFORCED CONCRETE LEDGE (NON-STRATA AREA)

-  SERVICES VOID SPACE (NON-STRATA AREA)
-  RAINWATER DOWNPIPE SHAFT SPACE (NON-STRATA AREA)
-  WALL NOT ALLOWED TO BE HACKED OR ALTERED (INCLUDING BY WAY OF DRILLING)
-  NON - STRUCTURAL WALL

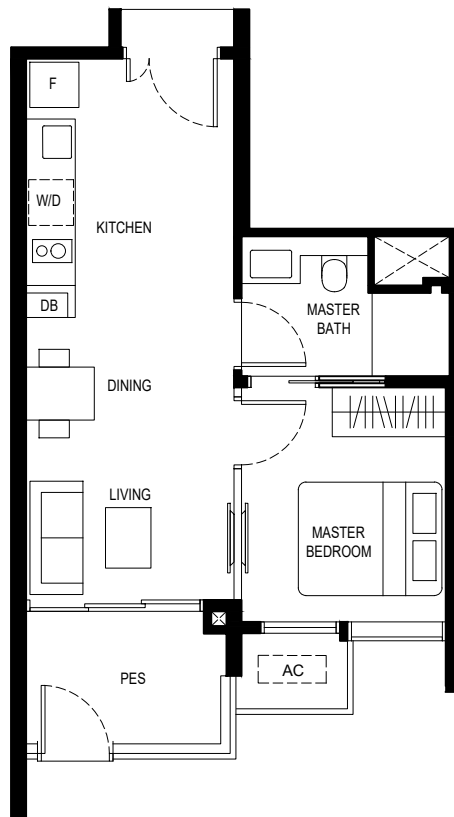


*THE BALCONY SHALL NOT BE ENCLOSED. ONLY APPROVED BALCONY SCREENS ARE TO BE USED. FOR AN ILLUSTRATION OF THE APPROVED BALCONY SCREEN, PLEASE REFER TO PAGE XXX OF THIS BROCHURE

KASSIA

Type (1)b1

- #01-01
- #01-19
- #01-36*

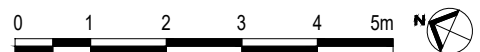


* MIRROR UNIT

LEGEND

F - FRIDGE DB - DISTRIBUTION BOARD W/D - WASHER CUM DRYER
 AC - AIRCON LEDGE PES - PRIVATE ENCLOSED SPACE

- SERVICES VOID SPACE (NON-STRATA AREA)
- RAINWATER DOWNPIPE SHAFT SPACE (NON-STRATA AREA)
- WALL NOT ALLOWED TO BE HACKED OR ALTERED (INCLUDING BY WAY OF DRILLING)
- NON - STRUCTURAL WALL



*THE BALCONY SHALL NOT BE ENCLOSED. ONLY APPROVED BALCONY SCREENS ARE TO BE USED. FOR AN ILLUSTRATION OF THE APPROVED BALCONY SCREEN, PLEASE REFER TO PAGE XXX OF THIS BROCHURE

KASSIA

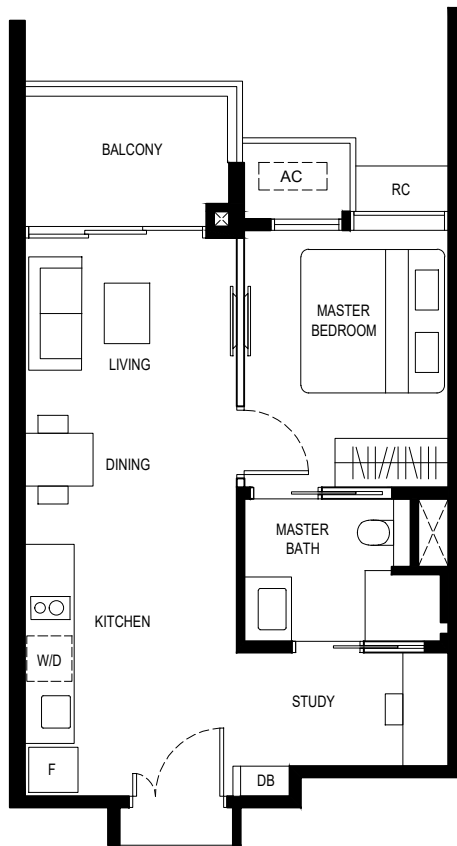
Type (1+1)a

#02-06 to #08-06

#02-13* to #08-13*

#02-24 to #08-24

#02-31* to #08-31*




* MIRROR UNIT


LEGEND

F - FRIDGE DB - DISTRIBUTION BOARD W/D - WASHER CUM DRYER

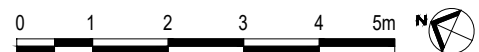
AC - AIRCON LEDGE RC - REINFORCED CONCRETE LEDGE (NON-STRATA AREA)

 SERVICES VOID SPACE (NON-STRATA AREA)

 RAINWATER DOWNPIPE SHAFT SPACE (NON-STRATA AREA)

 WALL NOT ALLOWED TO BE HACKED OR ALTERED (INCLUDING BY WAY OF DRILLING)

 NON - STRUCTURAL WALL

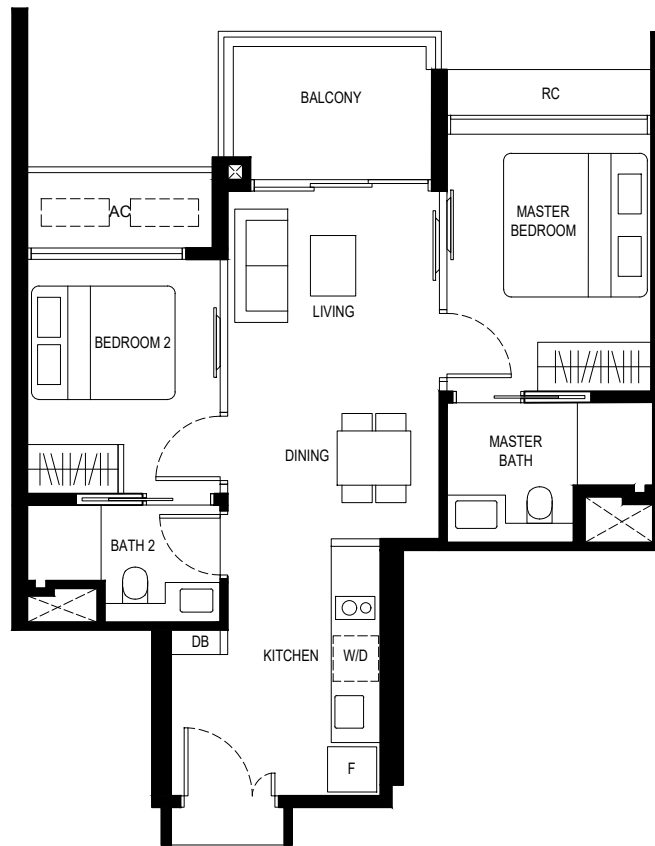


*THE BALCONY SHALL NOT BE ENCLOSED. ONLY APPROVED BALCONY SCREENS ARE TO BE USED. FOR AN ILLUSTRATION OF THE APPROVED BALCONY SCREEN, PLEASE REFER TO PAGE XXX OF THIS BROCHURE

KASSIA

Type (2)a

- #02-04 to #08-04
- #02-15* to #08-15*
- #02-22 to #08-22
- #02-33* to #08-33*

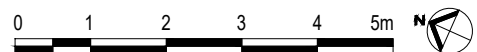


* MIRROR UNIT

LEGEND

F - FRIDGE DB - DISTRIBUTION BOARD W/D - WASHER CUM DRYER
 AC - AIRCON LEDGE RC - REINFORCED CONCRETE LEDGE (NON-STRATA AREA)

- SERVICES VOID SPACE (NON-STRATA AREA)
- RAINWATER DOWNPIPE SHAFT SPACE (NON-STRATA AREA)
- WALL NOT ALLOWED TO BE HACKED OR ALTERED (INCLUDING BY WAY OF DRILLING)
- NON - STRUCTURAL WALL

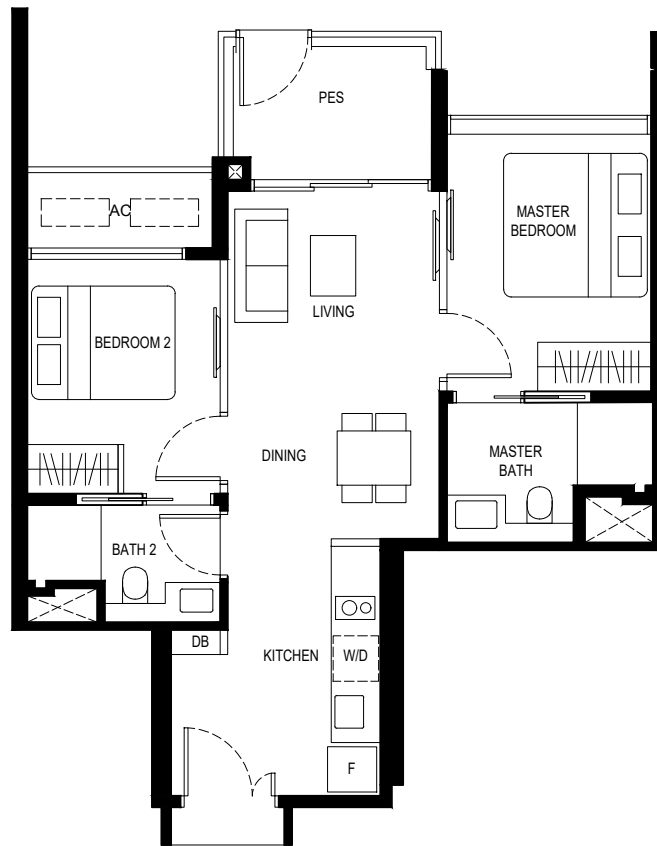


*THE BALCONY SHALL NOT BE ENCLOSED. ONLY APPROVED BALCONY SCREENS ARE TO BE USED. FOR AN ILLUSTRATION OF THE APPROVED BALCONY SCREEN, PLEASE REFER TO PAGE XXX OF THIS BROCHURE

KASSIA

Type (2)a1

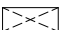


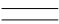
- #01-04
- #01-15*
- #01-22
- #01-33*

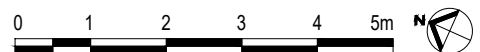


* MIRROR UNIT

LEGEND

F - FRIDGE DB - DISTRIBUTION BOARD W/D - WASHER CUM DRYER
 AC - AIRCON LEDGE PES - PRIVATE ENCLOSED SPACE

-  SERVICES VOID SPACE (NON-STRATA AREA)
-  RAINWATER DOWNPIPE SHAFT SPACE (NON-STRATA AREA)
-  WALL NOT ALLOWED TO BE HACKED OR ALTERED (INCLUDING BY WAY OF DRILLING)
-  NON - STRUCTURAL WALL

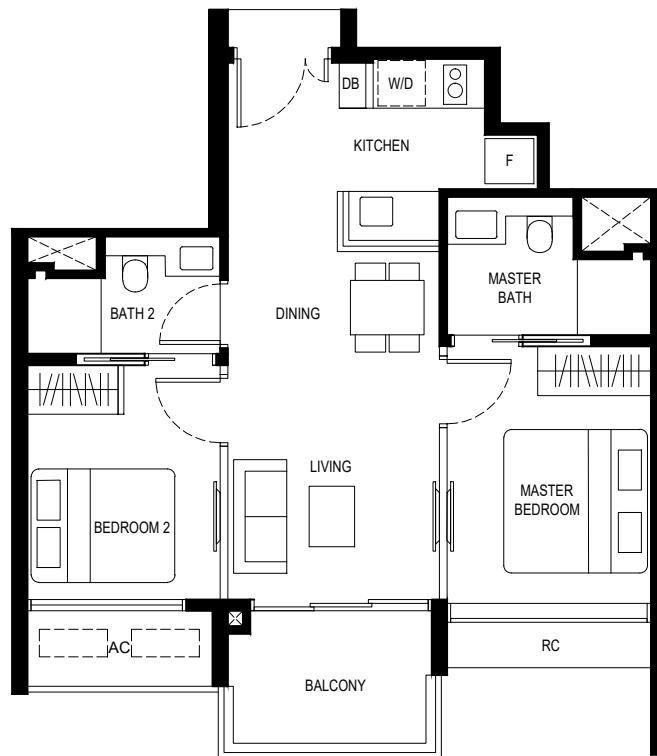


*THE BALCONY SHALL NOT BE ENCLOSED. ONLY APPROVED BALCONY SCREENS ARE TO BE USED. FOR AN ILLUSTRATION OF THE APPROVED BALCONY SCREEN, PLEASE REFER TO PAGE XXX OF THIS BROCHURE

KASSIA

Type (2)b

#02-09 to #08-09
 #02-27 to #08-27
 #02-28* to #08-28*

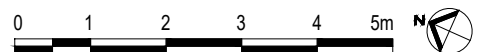


* MIRROR UNIT

LEGEND

F - FRIDGE DB - DISTRIBUTION BOARD W/D - WASHER CUM DRYER
 AC - AIRCON LEDGE RC - REINFORCED CONCRETE LEDGE (NON-STRATA AREA)

- SERVICES VOID SPACE (NON-STRATA AREA)
- RAINWATER DOWNPIPE SHAFT SPACE (NON-STRATA AREA)
- WALL NOT ALLOWED TO BE HACKED OR ALTERED (INCLUDING BY WAY OF DRILLING)
- NON - STRUCTURAL WALL



*THE BALCONY SHALL NOT BE ENCLOSED. ONLY APPROVED BALCONY SCREENS ARE TO BE USED. FOR AN ILLUSTRATION OF THE APPROVED BALCONY SCREEN, PLEASE REFER TO PAGE XXX OF THIS BROCHURE

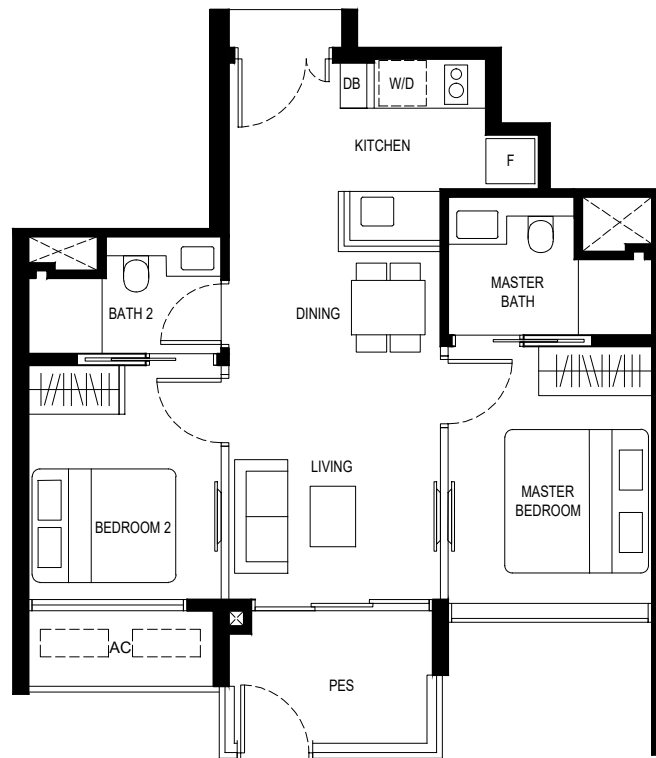
KASSIA

Type (2)b1

#01-09

#01-27

#01-28*



* MIRROR UNIT

LEGEND

F - FRIDGE DB - DISTRIBUTION BOARD W/D - WASHER CUM DRYER

AC - AIRCON LEDGE PES - PRIVATE ENCLOSED SPACE



SERVICES VOID SPACE (NON-STRATA AREA)



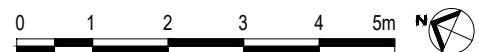
RAINWATER DOWNPIPE SHAFT SPACE (NON-STRATA AREA)



WALL NOT ALLOWED TO BE HACKED OR ALTERED (INCLUDING BY WAY OF DRILLING)



NON - STRUCTURAL WALL

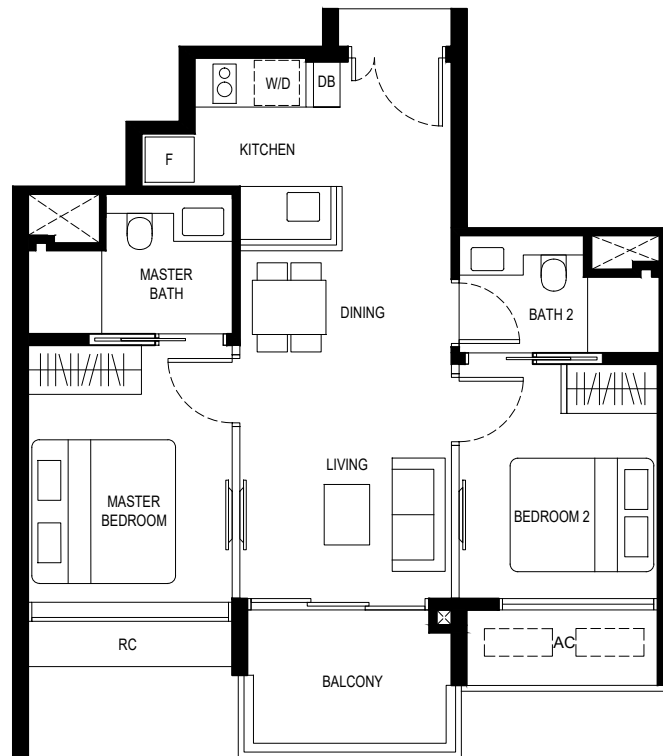


*THE BALCONY SHALL NOT BE ENCLOSED. ONLY APPROVED BALCONY SCREENS ARE TO BE USED. FOR AN ILLUSTRATION OF THE APPROVED BALCONY SCREEN, PLEASE REFER TO PAGE XXX OF THIS BROCHURE

KASSIA

Type (2)c

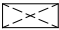


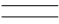
#02-10 to #08-10
 #02-18* to #08-18*

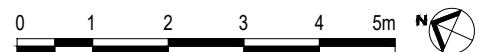


* MIRROR UNIT

LEGEND

F - FRIDGE DB - DISTRIBUTION BOARD W/D - WASHER CUM DRYER
 AC - AIRCON LEDGE RC - REINFORCED CONCRETE LEDGE (NON-STRATA AREA)

-  SERVICES VOID SPACE (NON-STRATA AREA)
-  RAINWATER DOWNPIPE SHAFT SPACE (NON-STRATA AREA)
-  WALL NOT ALLOWED TO BE HACKED OR ALTERED (INCLUDING BY WAY OF DRILLING)
-  NON - STRUCTURAL WALL



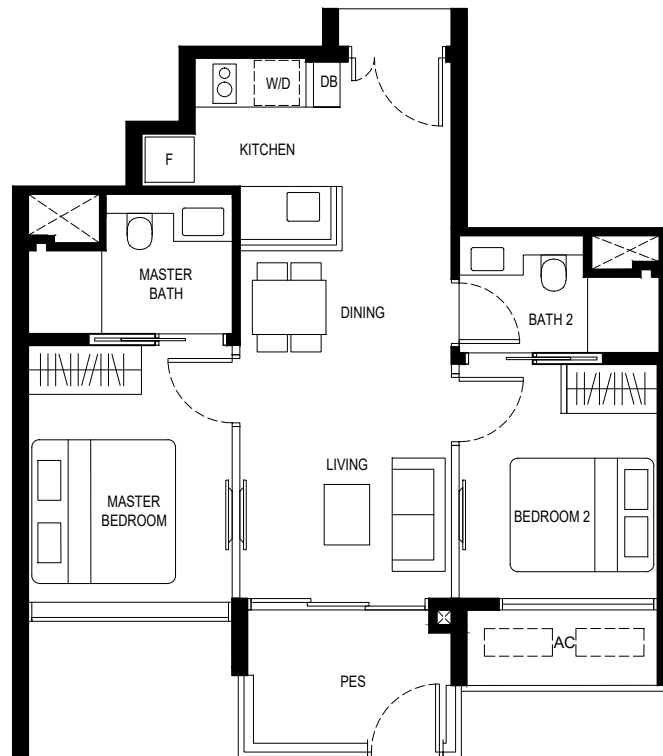
*THE BALCONY SHALL NOT BE ENCLOSED. ONLY APPROVED BALCONY SCREENS ARE TO BE USED. FOR AN ILLUSTRATION OF THE APPROVED BALCONY SCREEN, PLEASE REFER TO PAGE XXX OF THIS BROCHURE

KASSIA

Type (2)c1

#01-10

#01-18*

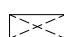



* MIRROR UNIT


LEGEND

F - FRIDGE DB - DISTRIBUTION BOARD W/D - WASHER CUM DRYER

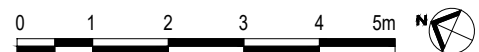
AC - AIRCON LEDGE PES - PRIVATE ENCLOSED SPACE

 SERVICES VOID SPACE (NON-STRATA AREA)

 RAINWATER DOWNPIPE SHAFT SPACE (NON-STRATA AREA)

 WALL NOT ALLOWED TO BE HACKED OR ALTERED (INCLUDING BY WAY OF DRILLING)

 NON - STRUCTURAL WALL

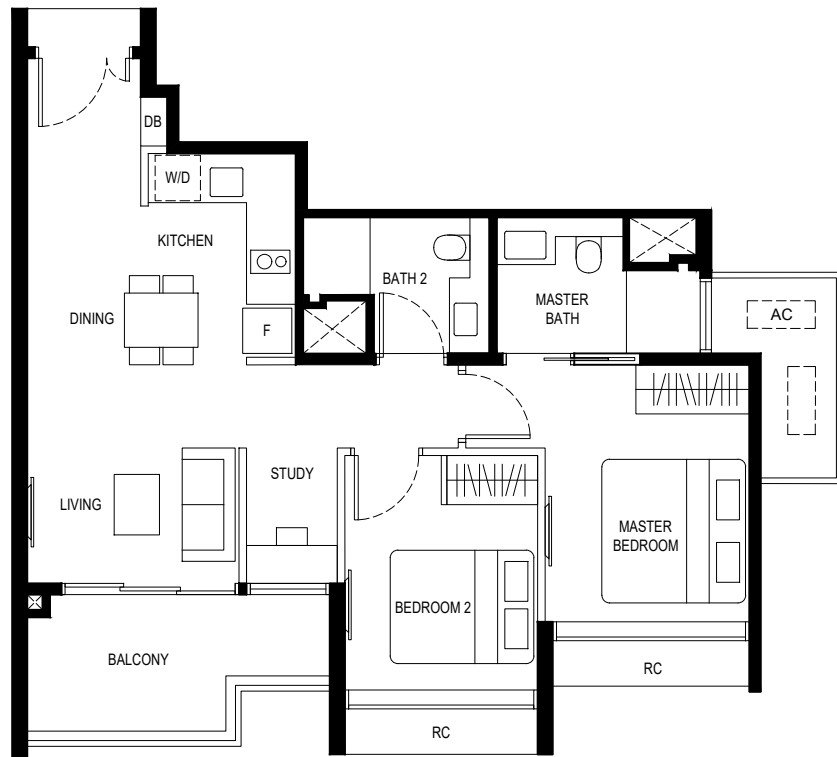


*THE BALCONY SHALL NOT BE ENCLOSED. ONLY APPROVED BALCONY SCREENS ARE TO BE USED. FOR AN ILLUSTRATION OF THE APPROVED BALCONY SCREEN, PLEASE REFER TO PAGE XXX OF THIS BROCHURE

KASSIA

Type (2+1)a





#02-08 to #08-08
 #02-11* to #08-11*
 #02-26 to #08-26
 #02-29 to #08-29*

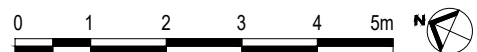


* MIRROR UNIT

LEGEND

F - FRIDGE DB - DISTRIBUTION BOARD W/D - WASHER CUM DRYER
 AC - AIRCON LEDGE RC - REINFORCED CONCRETE LEDGE (NON-STRATA AREA)

-  SERVICES VOID SPACE (NON-STRATA AREA)
-  RAINWATER DOWNPIPE SHAFT SPACE (NON-STRATA AREA)
-  WALL NOT ALLOWED TO BE HACKED OR ALTERED (INCLUDING BY WAY OF DRILLING)
-  NON - STRUCTURAL WALL

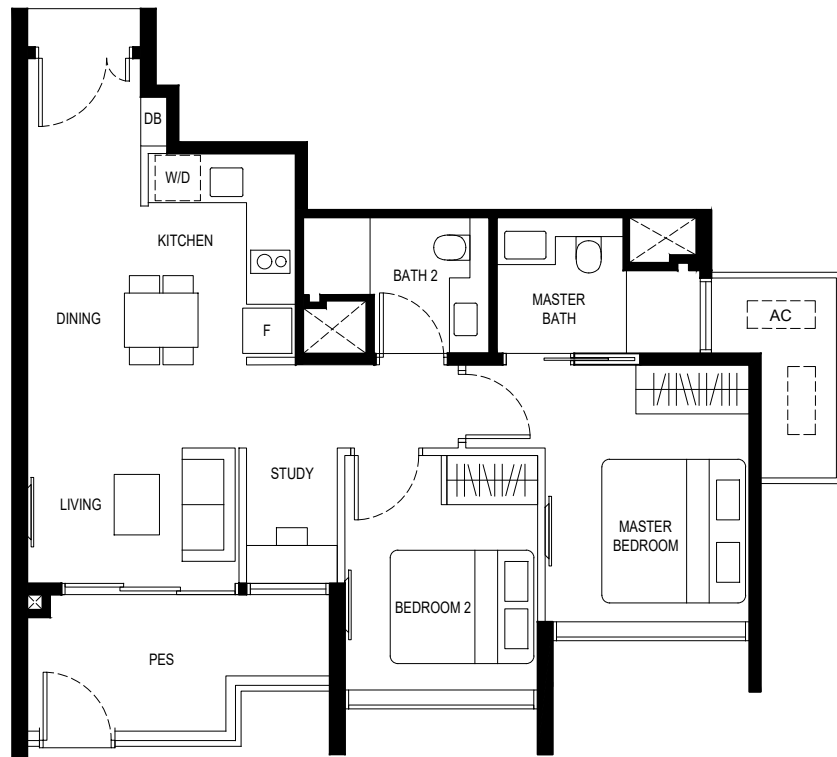


*THE BALCONY SHALL NOT BE ENCLOSED. ONLY APPROVED BALCONY SCREENS ARE TO BE USED. FOR AN ILLUSTRATION OF THE APPROVED BALCONY SCREEN, PLEASE REFER TO PAGE XXX OF THIS BROCHURE

KASSIA

Type (2+1)a1

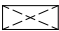


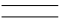
- #01-08
- #01-11*
- #01-26
- #01-29*

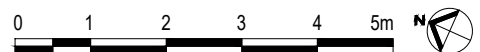


* MIRROR UNIT

LEGEND

F - FRIDGE DB - DISTRIBUTION BOARD W/D - WASHER CUM DRYER
 AC - AIRCON LEDGE PES - PRIVATE ENCLOSED SPACE

-  SERVICES VOID SPACE (NON-STRATA AREA)
-  RAINWATER DOWNPIPE SHAFT SPACE (NON-STRATA AREA)
-  WALL NOT ALLOWED TO BE HACKED OR ALTERED (INCLUDING BY WAY OF DRILLING)
-  NON - STRUCTURAL WALL

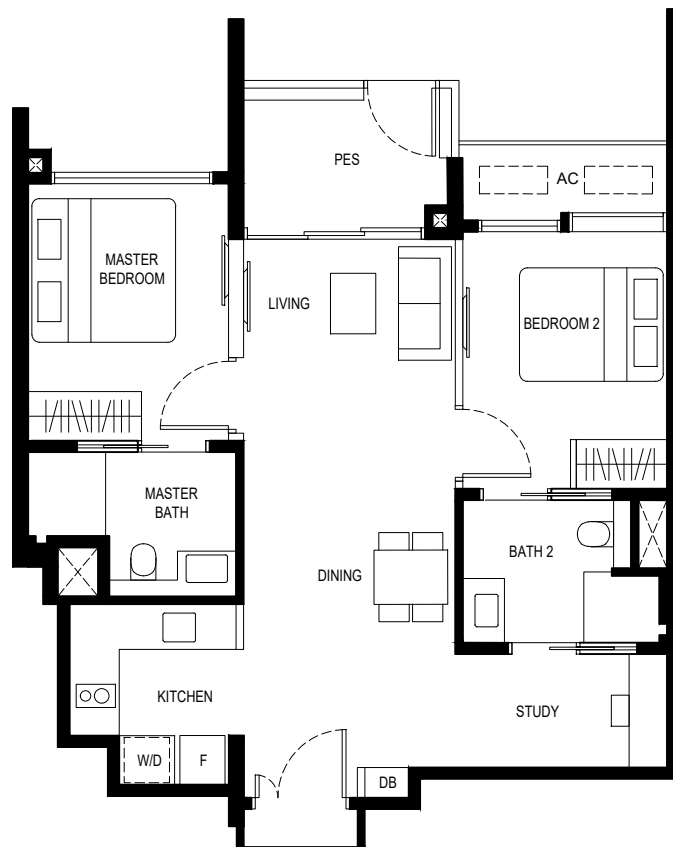


*THE BALCONY SHALL NOT BE ENCLOSED. ONLY APPROVED BALCONY SCREENS ARE TO BE USED. FOR AN ILLUSTRATION OF THE APPROVED BALCONY SCREEN, PLEASE REFER TO PAGE XXX OF THIS BROCHURE

KASSIA

Type (2+1)b1

- #01-06
- #01-13*
- #01-24
- #01-31*

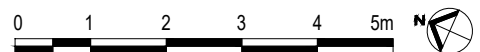


* MIRROR UNIT

LEGEND

F - FRIDGE DB - DISTRIBUTION BOARD W/D - WASHER CUM DRYER
 AC - AIRCON LEDGE PES - PRIVATE ENCLOSED SPACE

- SERVICES VOID SPACE (NON-STRATA AREA)
- RAINWATER DOWNPIPE SHAFT SPACE (NON-STRATA AREA)
- WALL NOT ALLOWED TO BE HACKED OR ALTERED (INCLUDING BY WAY OF DRILLING)
- NON - STRUCTURAL WALL



*THE BALCONY SHALL NOT BE ENCLOSED. ONLY APPROVED BALCONY SCREENS ARE TO BE USED. FOR AN ILLUSTRATION OF THE APPROVED BALCONY SCREEN, PLEASE REFER TO PAGE XXX OF THIS BROCHURE

KASSIA

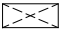


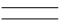
Type (3)a

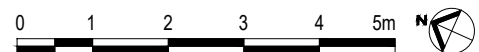
#03-17 to #08-17



LEGEND

F - FRIDGE DB - DISTRIBUTION BOARD W/D - WASHER CUM DRYER
 AC - AIRCON LEDGE RC - REINFORCED CONCRETE LEDGE (NON-STRATA AREA)

-  SERVICES VOID SPACE (NON-STRATA AREA)
-  RAINWATER DOWNPIPE SHAFT SPACE (NON-STRATA AREA)
-  WALL NOT ALLOWED TO BE HACKED OR ALTERED (INCLUDING BY WAY OF DRILLING)
-  NON - STRUCTURAL WALL



*THE BALCONY SHALL NOT BE ENCLOSED. ONLY APPROVED BALCONY SCREENS ARE TO BE USED. FOR AN ILLUSTRATION OF THE APPROVED BALCONY SCREEN, PLEASE REFER TO PAGE XXX OF THIS BROCHURE

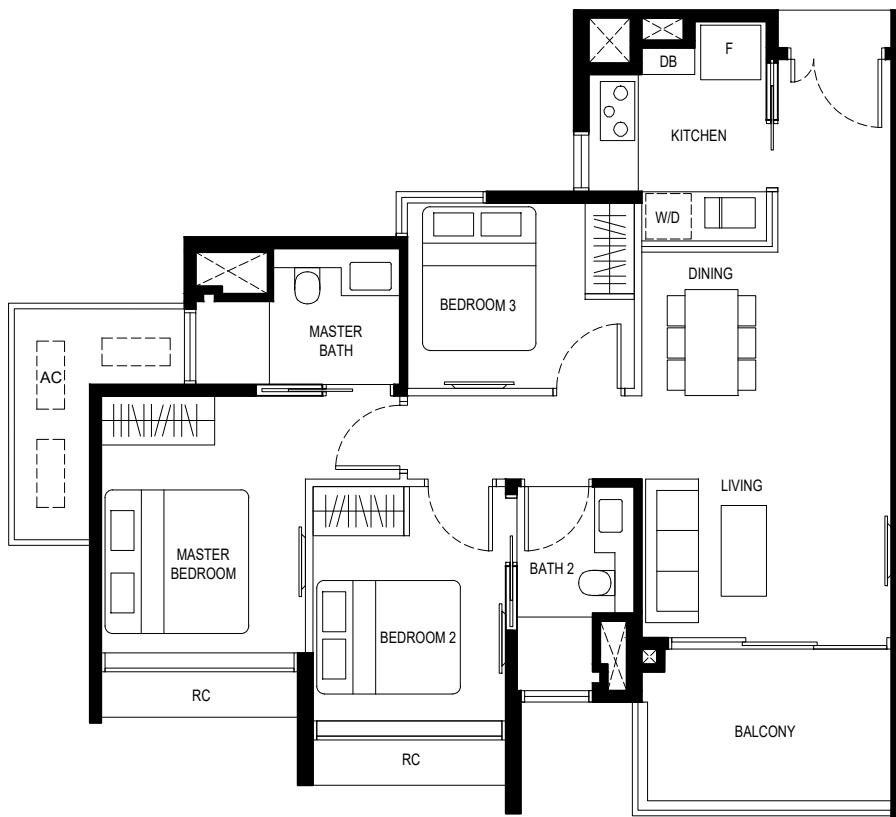
KASSIA

Type (3)b

#03-02 to #08-02

#03-20 to #08-20

#03-35* to #08-35*



* MIRROR UNIT

LEGEND

F - FRIDGE DB - DISTRIBUTION BOARD W/D - WASHER CUM DRYER

AC - AIRCON LEDGE RC - REINFORCED CONCRETE LEDGE (NON-STRATA AREA)



SERVICES VOID SPACE (NON-STRATA AREA)



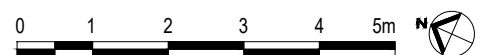
RAINWATER DOWNPIPE SHAFT SPACE (NON-STRATA AREA)



WALL NOT ALLOWED TO BE HACKED OR ALTERED
(INCLUDING BY WAY OF DRILLING)



NON - STRUCTURAL WALL



*THE BALCONY SHALL NOT BE ENCLOSED. ONLY APPROVED BALCONY SCREENS ARE TO BE USED. FOR AN ILLUSTRATION OF THE APPROVED BALCONY SCREEN, PLEASE REFER TO PAGE XXX OF THIS BROCHURE

KASSIA

Type (3Y)a

#02-03 to #08-03
 #02-16* to #08-16*
 #02-21 to #08-21
 #02-34* to #08-34*



* MIRROR UNIT


LEGEND


F - FRIDGE DB - DISTRIBUTION BOARD WC - WATER CLOSET W - WASHER

D - DRYER AC - AIRCON LEDGE HS - HOUSEHOLD SHELTER

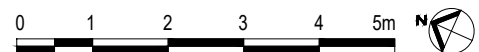
RC - REINFORCED CONCRETE LEDGE (NON-STRATA AREA)

 SERVICES VOID SPACE (NON-STRATA AREA)

 RAINWATER DOWNPIPE SHAFT SPACE (NON-STRATA AREA)

 WALL NOT ALLOWED TO BE HACKED OR ALTERED (INCLUDING BY WAY OF DRILLING)

 NON - STRUCTURAL WALL



*THE BALCONY SHALL NOT BE ENCLOSED. ONLY APPROVED BALCONY SCREENS ARE TO BE USED. FOR AN ILLUSTRATION OF THE APPROVED BALCONY SCREEN, PLEASE REFER TO PAGE XXX OF THIS BROCHURE

KASSIA

Type (3Y)a1

- #01-03
- #01-16*
- #01-21
- #01-34*

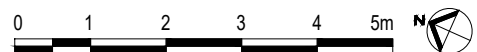


* MIRROR UNIT

LEGEND

F - FRIDGE DB - DISTRIBUTION BOARD WC - WATER CLOSET W - WASHER D - DRYER
 AC - AIRCON LEDGE HS - HOUSEHOLD SHELTER PES - PRIVATE ENCLOSED SPACE

- SERVICES VOID SPACE (NON-STRATA AREA)
- RAINWATER DOWNPIPE SHAFT SPACE (NON-STRATA AREA)
- WALL NOT ALLOWED TO BE HACKED OR ALTERED (INCLUDING BY WAY OF DRILLING)
- NON - STRUCTURAL WALL

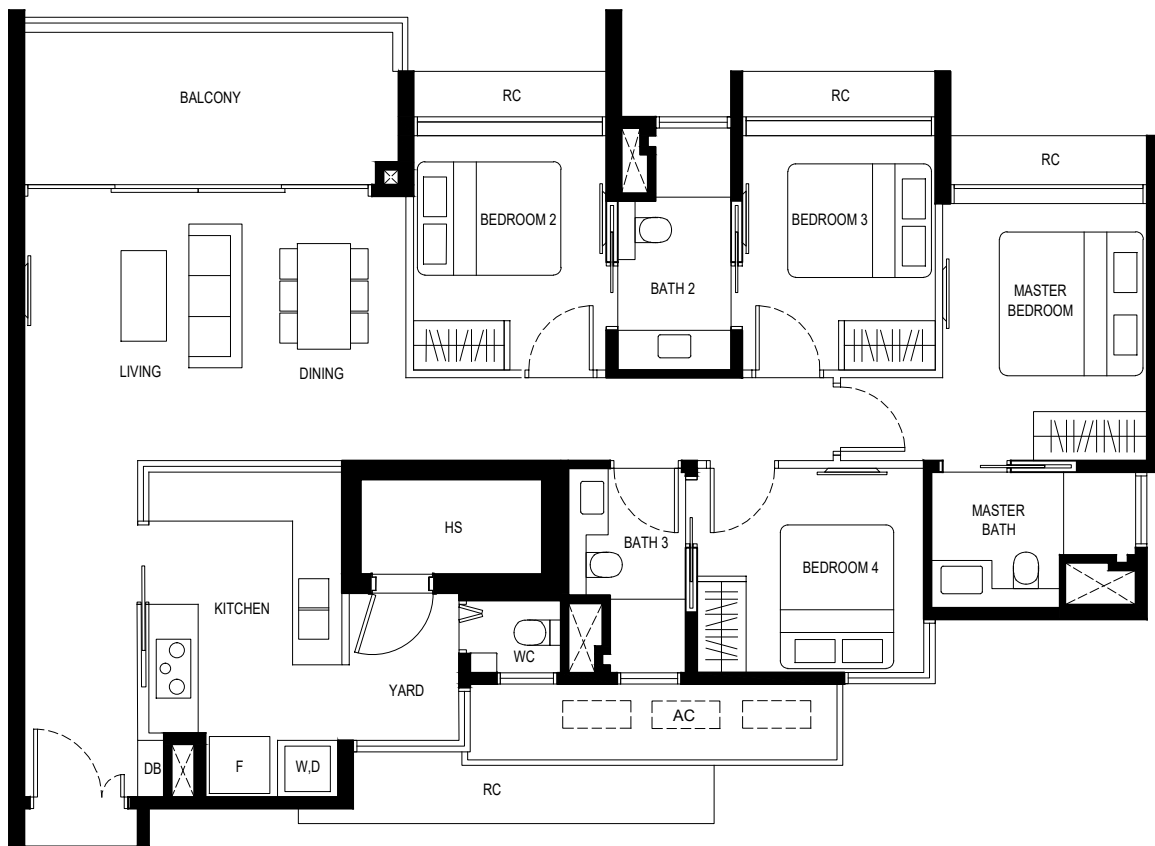


*THE BALCONY SHALL NOT BE ENCLOSED. ONLY APPROVED BALCONY SCREENS ARE TO BE USED. FOR AN ILLUSTRATION OF THE APPROVED BALCONY SCREEN, PLEASE REFER TO PAGE XXX OF THIS BROCHURE

KASSIA

Type (4)a

- #02-07 to #08-07
- #02-12* to #08-12*
- #02-25 to #08-25
- #02-30* to #08-30*



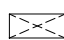
* MIRROR UNIT


LEGEND


F - FRIDGE DB - DISTRIBUTION BOARD WC - WATER CLOSET W - WASHER

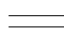
D - DRYER AC - AIRCON LEDGE HS - HOUSEHOLD SHELTER

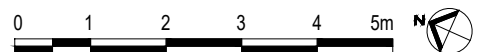
RC - REINFORCED CONCRETE LEDGE (NON-STRATA AREA)

 SERVICES VOID SPACE (NON-STRATA AREA)

 RAINWATER DOWNPIPE SHAFT SPACE (NON-STRATA AREA)

 WALL NOT ALLOWED TO BE HACKED OR ALTERED (INCLUDING BY WAY OF DRILLING)

 NON - STRUCTURAL WALL

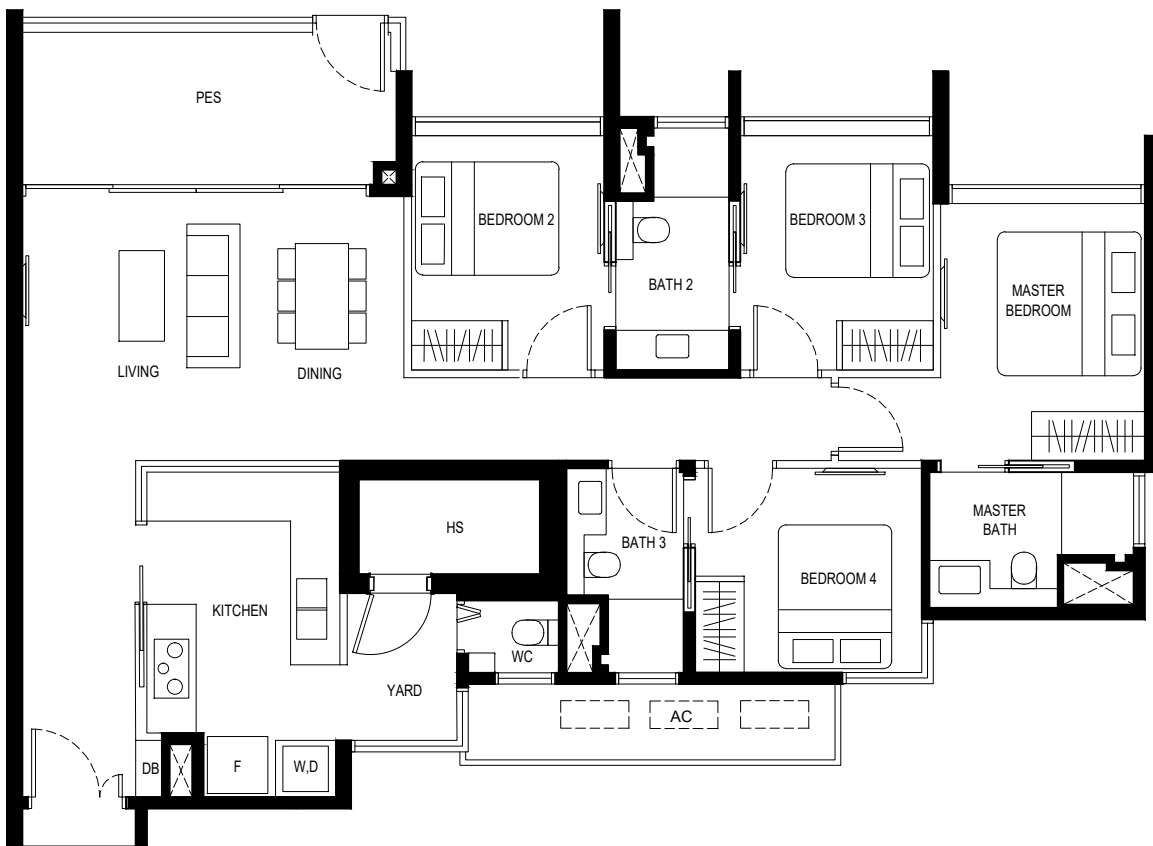


*THE BALCONY SHALL NOT BE ENCLOSED. ONLY APPROVED BALCONY SCREENS ARE TO BE USED. FOR AN ILLUSTRATION OF THE APPROVED BALCONY SCREEN, PLEASE REFER TO PAGE XXX OF THIS BROCHURE

KASSIA

Type (4)a1

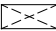



- #01-07
- #01-12*
- #01-25
- #01-30*

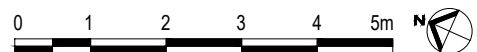


* MIRROR UNIT

LEGEND

F - FRIDGE DB - DISTRIBUTION BOARD WC - WATER CLOSET W - WASHER D - DRYER
 AC - AIRCON LEDGE HS - HOUSEHOLD SHELTER PES - PRIVATE ENCLOSED SPACE

-  SERVICES VOID SPACE (NON-STRATA AREA)
-  RAINWATER DOWNPIPE SHAFT SPACE (NON-STRATA AREA)
-  WALL NOT ALLOWED TO BE HACKED OR ALTERED (INCLUDING BY WAY OF DRILLING)
-  NON - STRUCTURAL WALL



*THE BALCONY SHALL NOT BE ENCLOSED. ONLY APPROVED BALCONY SCREENS ARE TO BE USED. FOR AN ILLUSTRATION OF THE APPROVED BALCONY SCREEN, PLEASE REFER TO PAGE XXX OF THIS BROCHURE