

2 BEDROOM TYPE B1 50 SQ M / 538 SQ FT INCLUSIVE OF 3 SQM BALCONY

TOWER 5
UNIT
#02-05 TO #36-05 *

TOWER 7
UNIT
#02-12 TO #36-12

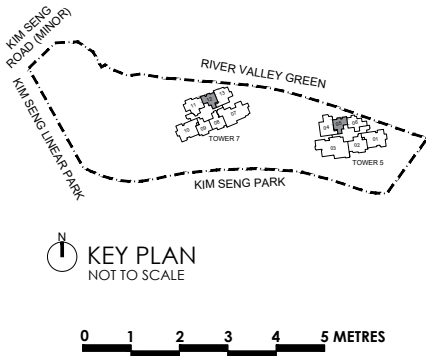


Legend : (Where Applicable)

- | | | |
|--------------------|-------------------------|------------|
| F - Fridge | WD - Washer Dryer | ST - Store |
| IH - Induction Hob | W - Washer | |
| GH - Gas Hob | D - Dryer | |
| O - Oven | P - Pantry | |
| SO - Steam Oven | DB - Distribution Board | |
- *Mirror Image

ALL PLANS ARE SUBJECTED TO AMENDMENTS AS MAY BE APPROVED BY THE RELEVANT AUTHORITIES.
FLOOR AREAS ARE APPROXIMATE MEASUREMENTS AND ARE SUBJECTED TO FINAL SURVEY.

BUILDING PLAN APPROVAL NO. : A1716-00044-2025-BP01
DATED : 27 JAN 2026



2 BEDROOM
TYPE B2
60 SQ M / 646 SQ FT
INCLUSIVE OF 3 SQM BALCONY

TOWER 5
UNIT
#02-06 TO #36-06

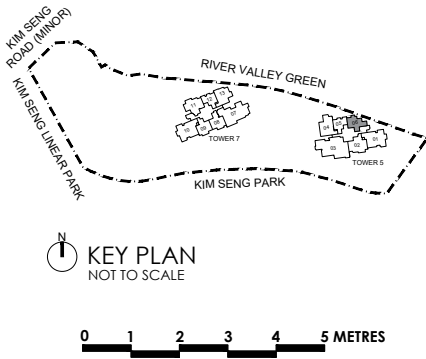


Legend : (Where Applicable)

- F - Fridge
- WD - Washer Dryer
- ST - Store
- IH - Induction Hob
- W - Washer
- GH - Gas Hob
- D - Dryer
- O - Oven
- P - Pantry
- SO - Steam Oven
- DB - Distribution Board
- *Mirror Image

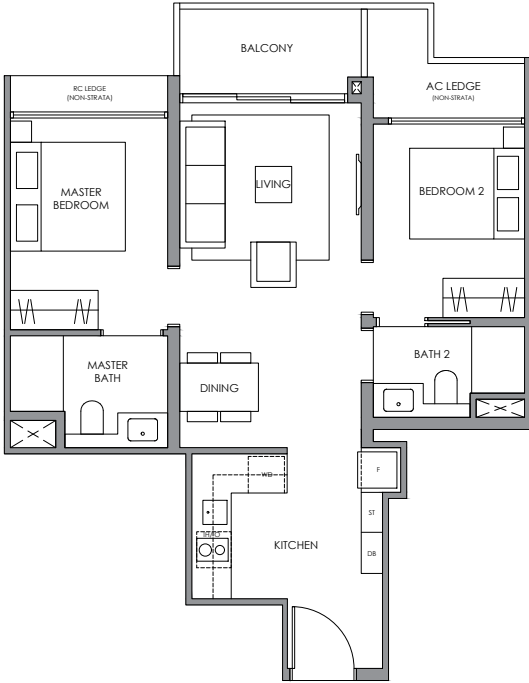
ALL PLANS ARE SUBJECTED TO AMENDMENTS AS MAY BE APPROVED BY THE RELEVANT AUTHORITIES.
FLOOR AREAS ARE APPROXIMATE MEASUREMENTS AND ARE SUBJECT TO FINAL SURVEY.

BUILDING PLAN APPROVAL NO. : A1716-00044-2025-BP01
DATED : 27 JAN 2026



2 BEDROOM
TYPE B3
63 SQ M / 678 SQ FT
INCLUSIVE OF 5 SQM BALCONY

TOWER 7
UNIT
#02-09 TO #36-09

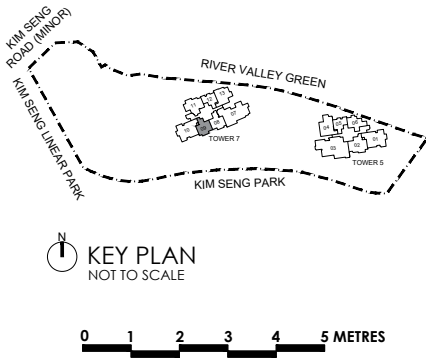


Legend : (Where Applicable)

- | | | |
|--------------------|-------------------------|------------|
| F - Fridge | WD - Washer Dryer | ST - Store |
| IH - Induction Hob | W - Washer | |
| GH - Gas Hob | D - Dryer | |
| O - Oven | P - Pantry | |
| SO - Steam Oven | DB - Distribution Board | |
- *Mirror Image

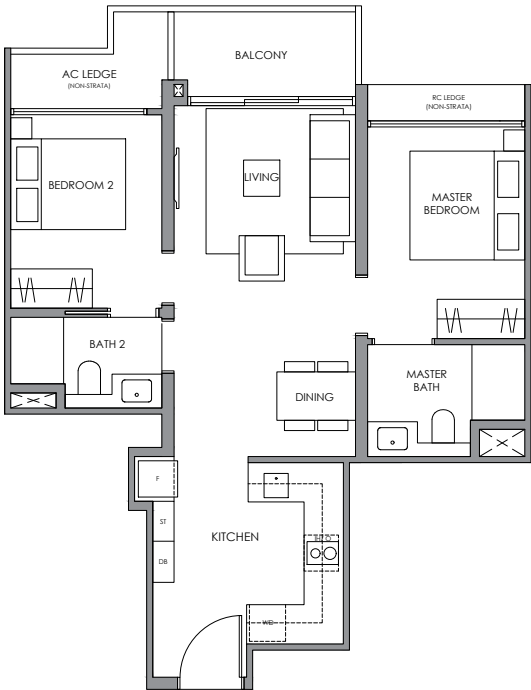
ALL PLANS ARE SUBJECTED TO AMENDMENTS AS MAY BE APPROVED BY THE RELEVANT AUTHORITIES.
FLOOR AREAS ARE APPROXIMATE MEASUREMENTS AND ARE SUBJECTED TO FINAL SURVEY.

BUILDING PLAN APPROVAL NO. : A1716-00044-2025-BP01
DATED : 27 JAN 2026



2 BEDROOM
TYPE B4
64 SQ M / 689 SQ FT
INCLUSIVE OF 5 SQM BALCONY

TOWER 7
UNIT
#02-08 TO #36-08

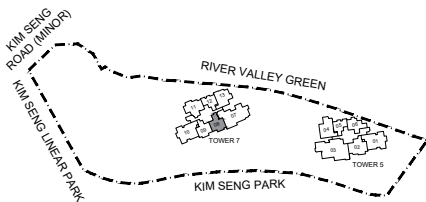


Legend : (Where Applicable)

- | | | |
|--------------------|-------------------------|------------|
| F - Fridge | WD - Washer Dryer | ST - Store |
| IH - Induction Hob | W - Washer | |
| GH - Gas Hob | D - Dryer | |
| O - Oven | P - Pantry | |
| SO - Steam Oven | DB - Distribution Board | |
- *Mirror Image

ALL PLANS ARE SUBJECTED TO AMENDMENTS AS MAY BE APPROVED BY THE RELEVANT AUTHORITIES.
FLOOR AREAS ARE APPROXIMATE MEASUREMENTS AND ARE SUBJECTED TO FINAL SURVEY.

BUILDING PLAN APPROVAL NO. : A1716-00044-2025-BP01
DATED : 27 JAN 2026

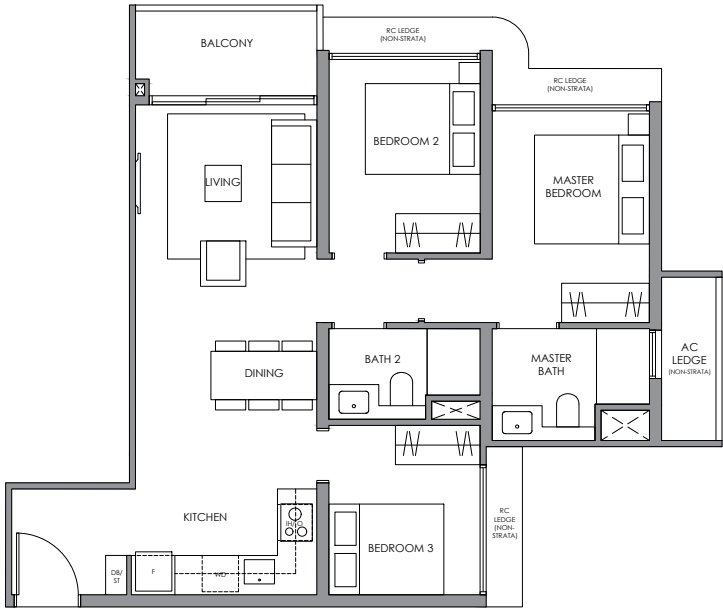


KEY PLAN
NOT TO SCALE

0 1 2 3 4 5 METRES

3 BEDROOM
TYPE C1
74 SQ M / 797 SQ FT
INCLUSIVE OF 5 SQM BALCONY

TOWER 7
UNIT
#02-13 TO #36-13

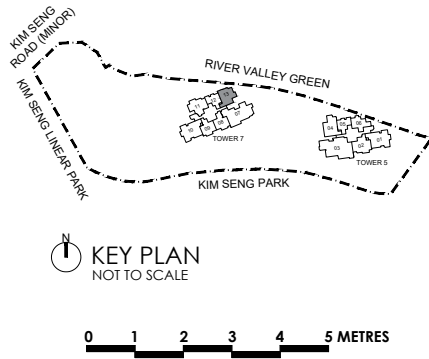


Legend : (Where Applicable)

- | | | |
|--------------------|-------------------------|------------|
| F - Fridge | WD - Washer Dryer | ST - Store |
| IH - Induction Hob | W - Washer | |
| GH - Gas Hob | D - Dryer | |
| O - Oven | P - Pantry | |
| SO - Steam Oven | DB - Distribution Board | |
- *Mirror Image

ALL PLANS ARE SUBJECTED TO AMENDMENTS AS MAY BE APPROVED BY THE RELEVANT AUTHORITIES.
FLOOR AREAS ARE APPROXIMATE MEASUREMENTS AND ARE SUBJECTED TO FINAL SURVEY.

BUILDING PLAN APPROVAL NO. : A1716-00044-2025-BP01
DATED : 27 JAN 2026



3 BEDROOM
TYPE C2
77 SQ M / 829 SQ FT
INCLUSIVE OF 5 SQM BALCONY

TOWER 7
UNIT
#02-11 TO #36-11

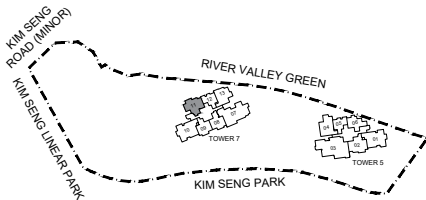


Legend : (Where Applicable)

- | | | |
|--------------------|-------------------------|------------|
| F - Fridge | WD - Washer Dryer | ST - Store |
| IH - Induction Hob | W - Washer | |
| GH - Gas Hob | D - Dryer | |
| O - Oven | P - Pantry | |
| SO - Steam Oven | DB - Distribution Board | |
- *Mirror Image

ALL PLANS ARE SUBJECTED TO AMENDMENTS AS MAY BE APPROVED BY THE RELEVANT AUTHORITIES.
FLOOR AREAS ARE APPROXIMATE MEASUREMENTS AND ARE SUBJECT TO FINAL SURVEY.

BUILDING PLAN APPROVAL NO. : A1716-00044-2025-BP01
DATED : 27 JAN 2026

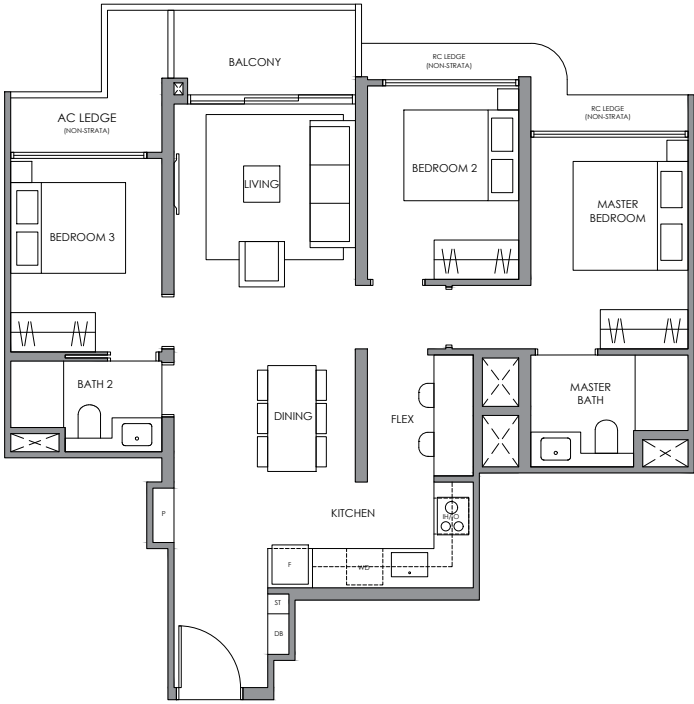


N
KEY PLAN
NOT TO SCALE

0 1 2 3 4 5 METRES

3 BEDROOM
TYPE C3
83 SQ M / 893 SQ FT
INCLUSIVE OF 5 SQM BALCONY

TOWER 5
UNIT
#02-02 TO #36-02

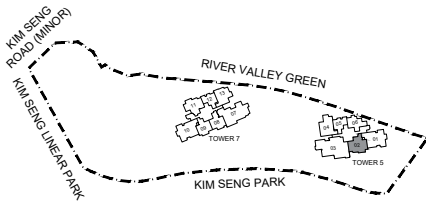


Legend : (Where Applicable)

- | | | |
|--------------------|-------------------------|------------|
| F - Fridge | WD - Washer Dryer | ST - Store |
| IH - Induction Hob | W - Washer | |
| GH - Gas Hob | D - Dryer | |
| O - Oven | P - Pantry | |
| SO - Steam Oven | DB - Distribution Board | |
- *Mirror Image

ALL PLANS ARE SUBJECTED TO AMENDMENTS AS MAY BE APPROVED BY THE RELEVANT AUTHORITIES.
FLOOR AREAS ARE APPROXIMATE MEASUREMENTS AND ARE SUBJECTED TO FINAL SURVEY.

BUILDING PLAN APPROVAL NO. : A1716-00044-2025-BP01
DATED : 27 JAN 2026

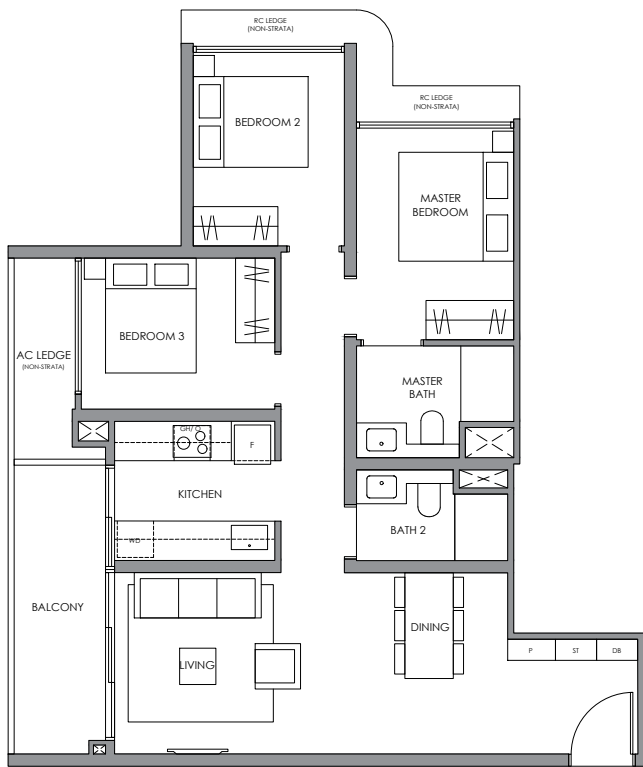


N
KEY PLAN
NOT TO SCALE

0 1 2 3 4 5 METRES

3 BEDROOM
TYPE C4
84 SQ M / 904 SQ FT
INCLUSIVE OF 8 SQM BALCONY

TOWER 5
UNIT
#02-04 TO #36-04

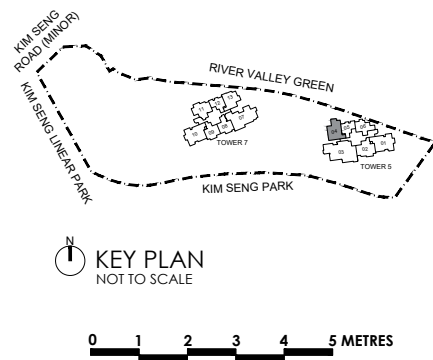


Legend : (Where Applicable)

- | | | |
|--------------------|-------------------------|------------|
| F - Fridge | WD - Washer Dryer | ST - Store |
| IH - Induction Hob | W - Washer | |
| GH - Gas Hob | D - Dryer | |
| O - Oven | P - Pantry | |
| SO - Steam Oven | DB - Distribution Board | |
- *Mirror Image

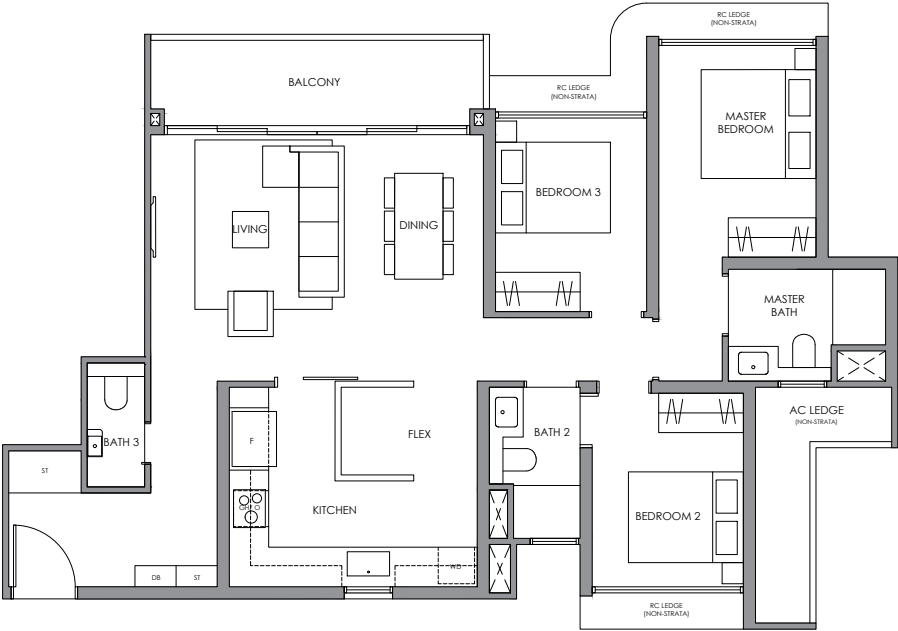
ALL PLANS ARE SUBJECTED TO AMENDMENTS AS MAY BE APPROVED BY THE RELEVANT AUTHORITIES.
FLOOR AREAS ARE APPROXIMATE MEASUREMENTS AND ARE SUBJECTED TO FINAL SURVEY.

BUILDING PLAN APPROVAL NO. : A1716-00044-2025-BP01
DATED : 27 JAN 2026



3 BEDROOM
TYPE C5
102 SQ M / 1098 SQ FT
INCLUSIVE OF 9 SQM BALCONY

TOWER 7
UNIT
#02-10 TO #36-10

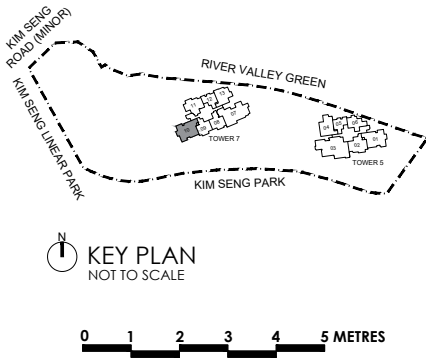


Legend : (Where Applicable)

- | | | |
|--------------------|-------------------------|------------|
| F - Fridge | WD - Washer Dryer | ST - Store |
| IH - Induction Hob | W - Washer | |
| GH - Gas Hob | D - Dryer | |
| O - Oven | P - Pantry | |
| SO - Steam Oven | DB - Distribution Board | |
- *Mirror Image

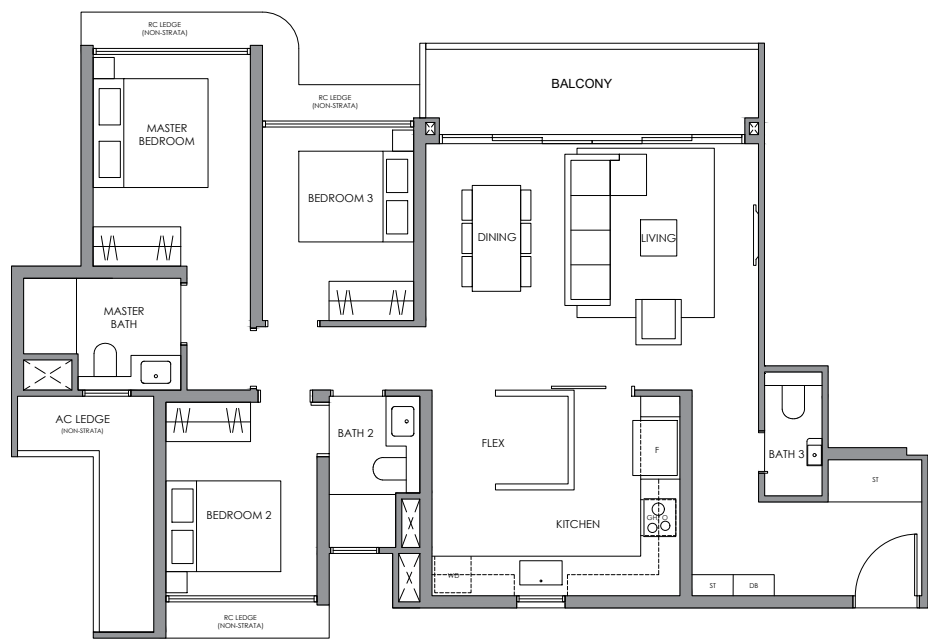
ALL PLANS ARE SUBJECTED TO AMENDMENTS AS MAY BE APPROVED BY THE RELEVANT AUTHORITIES.
FLOOR AREAS ARE APPROXIMATE MEASUREMENTS AND ARE SUBJECTED TO FINAL SURVEY.

BUILDING PLAN APPROVAL NO. : A1716-00044-2025-BP01
DATED : 27 JAN 2026



3 BEDROOM
TYPE C6
103 SQ M / 1109 SQ FT
INCLUSIVE OF 9 SQM BALCONY

TOWER 5
UNIT
#02-01 TO #36-01

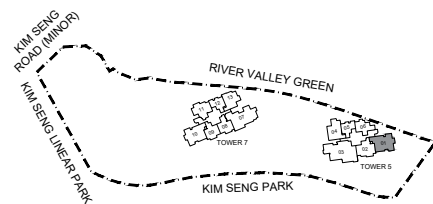


Legend : (Where Applicable)

- | | | |
|--------------------|-------------------------|------------|
| F - Fridge | WD - Washer Dryer | ST - Store |
| IH - Induction Hob | W - Washer | |
| GH - Gas Hob | D - Dryer | |
| O - Oven | P - Pantry | |
| SO - Steam Oven | DB - Distribution Board | |
- *Mirror Image

ALL PLANS ARE SUBJECTED TO AMENDMENTS AS MAY BE APPROVED BY THE RELEVANT AUTHORITIES.
FLOOR AREAS ARE APPROXIMATE MEASUREMENTS AND ARE SUBJECTED TO FINAL SURVEY.

BUILDING PLAN APPROVAL NO. : A1716-00044-2025-BP01
DATED : 27 JAN 2026

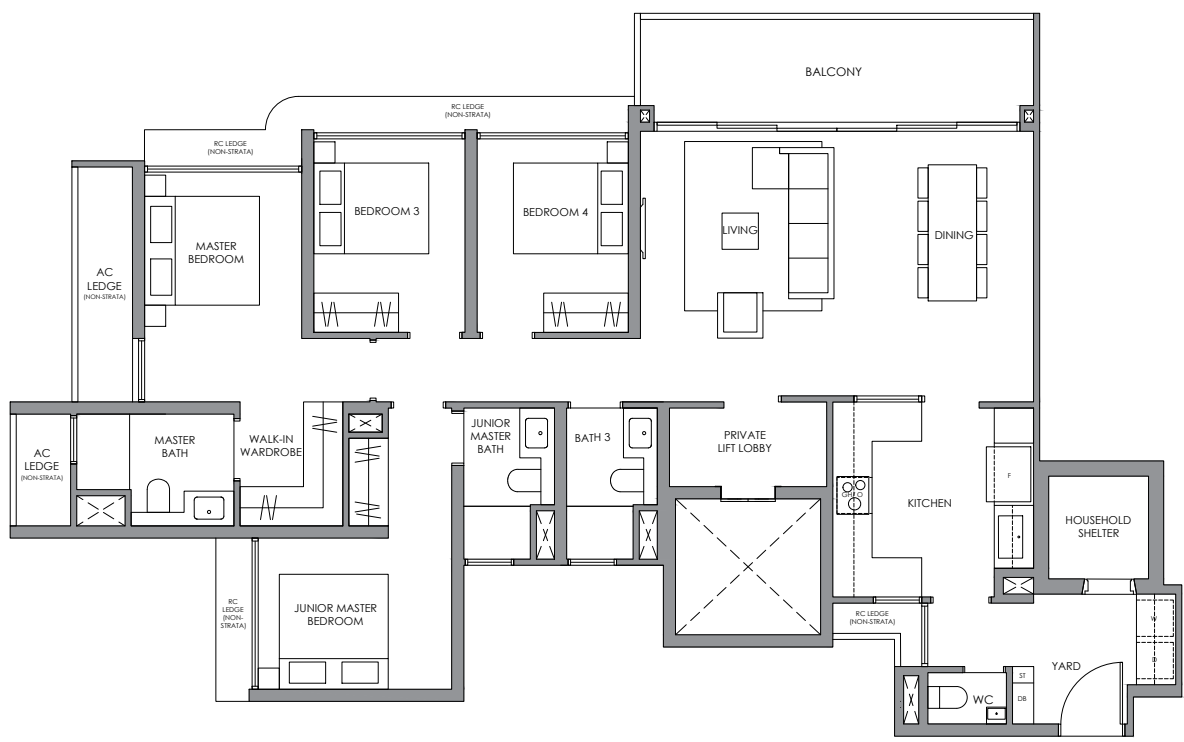


N
KEY PLAN
NOT TO SCALE

0 1 2 3 4 5 METRES

4 BEDROOM
TYPE D1
136 SQ M / 1464 SQ FT
INCLUSIVE OF 12 SQM BALCONY

TOWER 7
UNIT
#02-07 TO #36-07

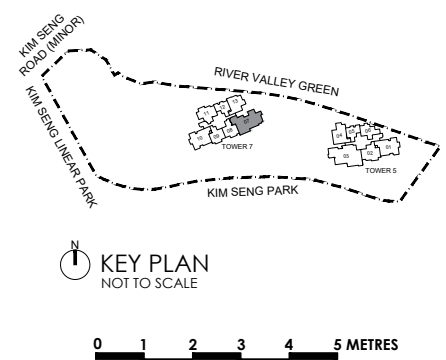


Legend : (Where Applicable)

- | | | |
|--------------------|-------------------------|------------|
| F - Fridge | WD - Washer Dryer | ST - Store |
| IH - Induction Hob | W - Washer | |
| GH - Gas Hob | D - Dryer | |
| O - Oven | P - Pantry | |
| SO - Steam Oven | DB - Distribution Board | |
- *Mirror Image

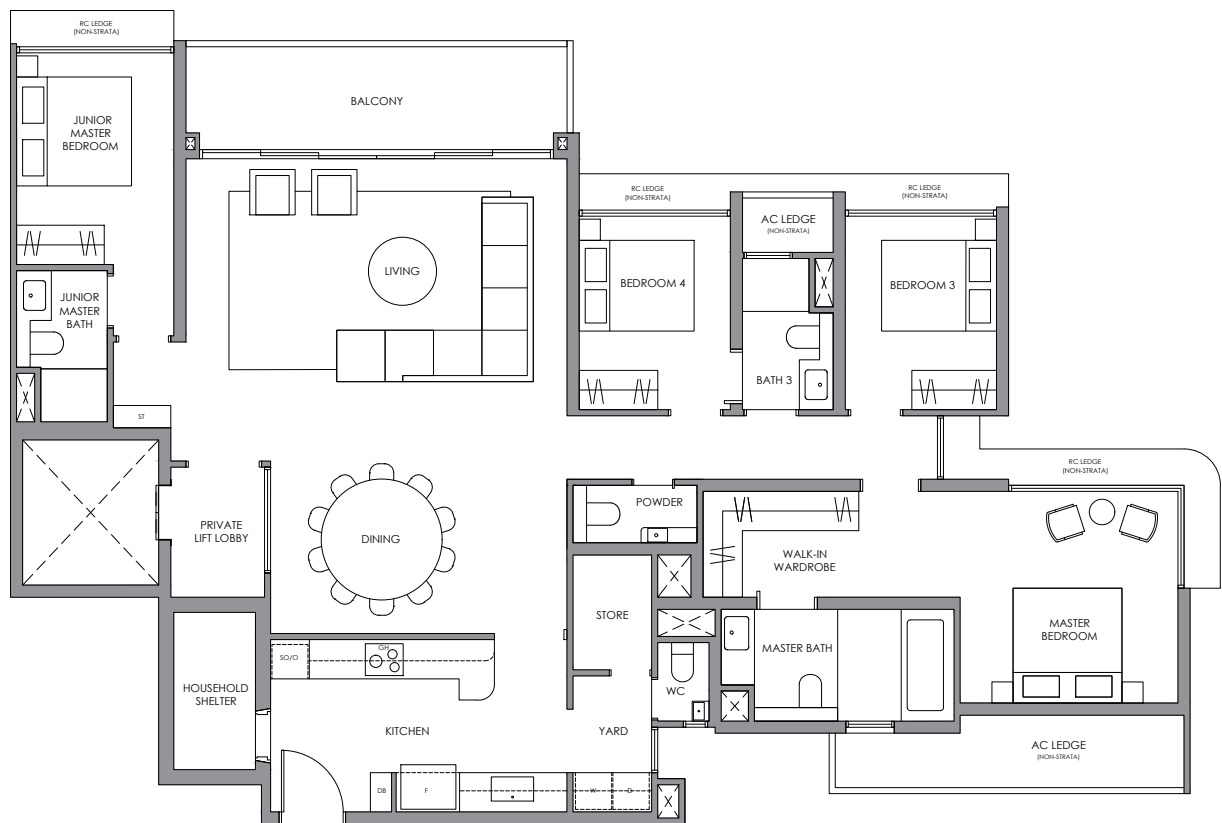
ALL PLANS ARE SUBJECTED TO AMENDMENTS AS MAY BE APPROVED BY THE RELEVANT AUTHORITIES.
FLOOR AREAS ARE APPROXIMATE MEASUREMENTS AND ARE SUBJECTED TO FINAL SURVEY.

BUILDING PLAN APPROVAL NO. : A1716-00044-2025-BP01
DATED : 27 JAN 2026



4 BEDROOM
TYPE D2
170 SQ M / 1830 SQ FT
INCLUSIVE OF 12 SQM BALCONY

TOWER 5
UNIT
#02-03 TO #36-03

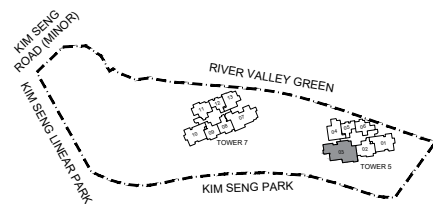


Legend : (Where Applicable)

- | | | |
|--------------------|-------------------------|------------|
| F - Fridge | WD - Washer Dryer | ST - Store |
| IH - Induction Hob | W - Washer | |
| GH - Gas Hob | D - Dryer | |
| O - Oven | P - Pantry | |
| SO - Steam Oven | DB - Distribution Board | |
- *Mirror Image

ALL PLANS ARE SUBJECT TO AMENDMENTS AS MAY BE APPROVED BY THE RELEVANT AUTHORITIES.
FLOOR AREAS ARE APPROXIMATE MEASUREMENTS AND ARE SUBJECT TO FINAL SURVEY.

BUILDING PLAN APPROVAL NO. : A1716-00044-2025-BP01
DATED : 27 JAN 2026



KEY PLAN
NOT TO SCALE

0 1 2 3 4 5 METRES